

ADAS EXPANSION PACKAGE

ADVANCED DRIVER ASSISTANCE SYSTEM

ADAS ACCESSORY PART NO: ADASACCESSORY

ALIGNS THE FRAME TO THE VEHICLE CENTERLINE

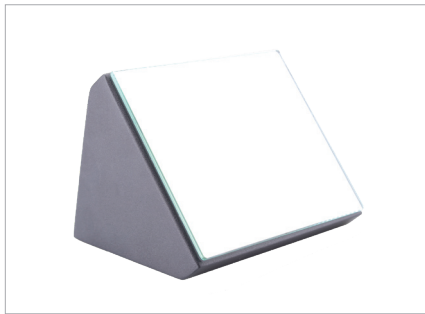
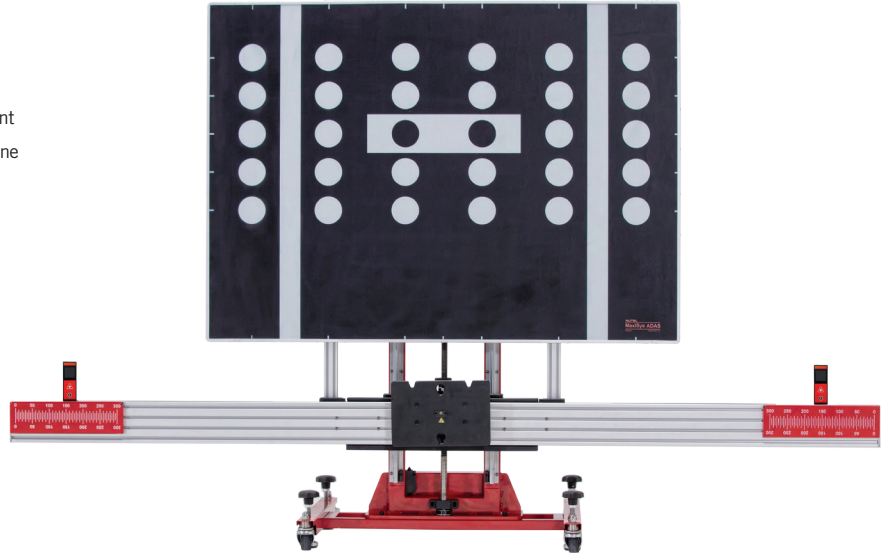
- **L-SHAPED BRACKET:** Assist with measuring distance from front wheel for frame placement
- **LASER ASSIST MIRROR:** Easier viewing under the car to set centerline
- **PLUMB BOB:** Transfer centerline of vehicle to point on ground
- **LASER REFLECTOR:** Used with Five Line or Two Line laser to find vehicle centerline
- **FIVE LINE LASER:** Used to find perpendicular axis from any point
- **TWO LINE LASER:** Used to align calibration frame to vehicle centerline

COMPATIBLE WITH THE AUTEL STANDARD FRAME >

*Frame not included with package.



TRAVEL CASE
INCLUDED



LASER ASSIST MIRROR
CSC1500-06



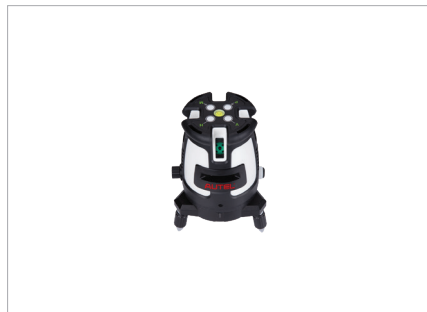
TWO LINE LASER
CSC1500-03



PLUMB BOB
CSC1500-07



L-SHAPED BRACKET
CSC1500-04



FIVE LINE LASER
CSC1500-05



LASER REFLECTOR
CSC1500-08

REQUIRED PARTS FOR THIS PACKAGE • Autel ADAS Standard Calibration Frame • MaxiSYS tablet with ADAS Calibration Software

WEB: AUTEL.COM | SUPPORT: 1.855.288.3587
EMAIL: USSUPPORT@AUTEL.COM

FOLLOW US @AUTELTOOLS



AUTEL®