

AUTEL MAXIIRT IR100

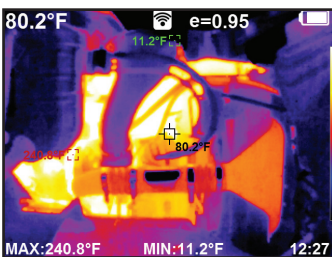
HOW TO USE INFRARED DIAGNOSTICS

A TECHNICIAN'S 6TH SENSE

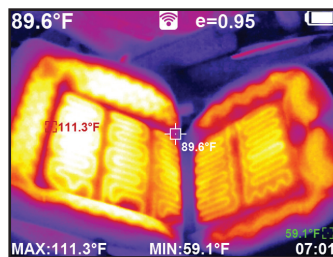


The IR100 thermal imaging camera helps diagnose and test temperature-related system functions before and after repair.

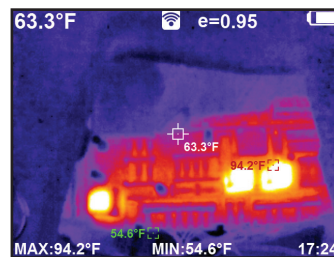
TURBOCHARGING



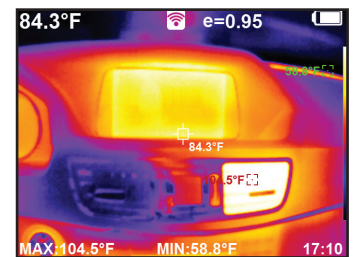
HEATED SEATS



FUSE BOX



HEAT/AC SYSTEM



Phone: (855) 288-3587 • USSUPPORT@AUTEL.COM
 AUTEL.COM • MAXITPMS.COM • MAXISYSADAS.COM
 ©2020 Autel U.S. Inc., All Rights Reserved

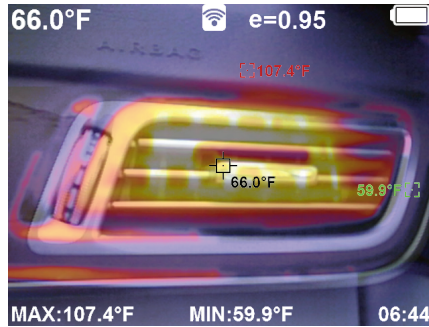


AUTEL

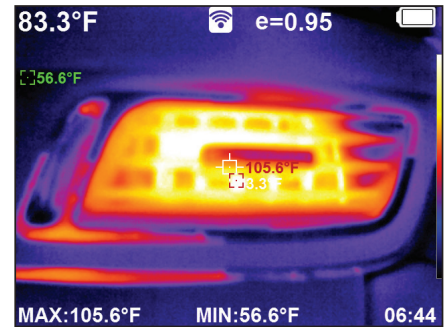
← UNFILTERED CAMERA **DUAL VIEW** INFRARED COLOR PALETTE →



LEVEL 1
NO INFRARED COLOR PALETTE, ONLY THE UNFILTERED CAMERA IS VISIBLE

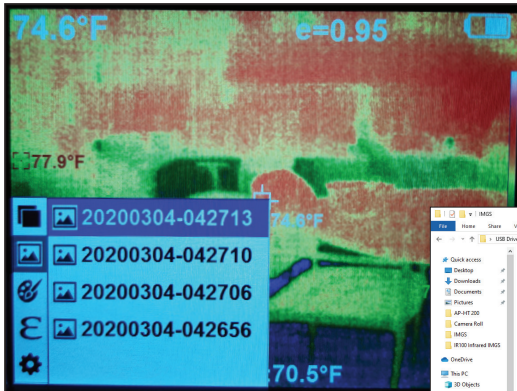


LEVEL 3
50% INFRARED COLOR PALETTE AND 50% UNFILTERED CAMERA ARE VISIBLE

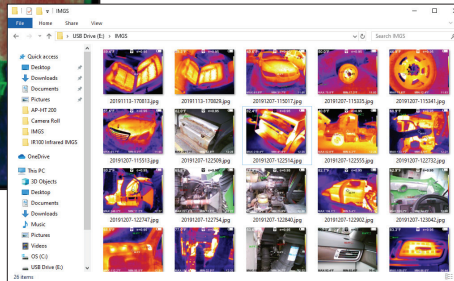


LEVEL 5
NO UNFILTERED CAMERA, ONLY THE INFRARED COLOR PALETTE IS VISIBLE

IMAGE LIBRARY

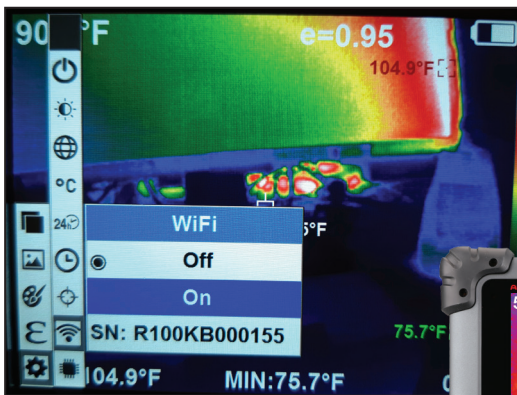


- Step 1:** Press the **Power/Menu** key to open the **Main Menu**
- Step 2:** Use the arrow keys to select the **Images** icon
- Step 3:** Use the arrow keys to highlight your image of choice
- Step 4:** Press the **Select/Enter** key to enlarge the photo on the screen
- Step 5:** To delete an image, use the **Up Arrow** key and select **Delete**



Connect IR100 to a PC to view and upload library

CONNECT TO TABLET



- Step 1:** Press the **Power/Menu** key to open the **Main Menu**
- Step 2:** Use the arrow keys to select **Settings**, then select the **Wi-Fi** icon
- Step 3:** Turn the Wi-Fi option to **On**
- Step 4:** Use a MaxiSYS tablet or smart device to search for a Wi-Fi hotspot (the name will be the tool serial number)
- Step 5:** Once connected, use a web browser and enter the IP address: 192.168.230.1

